



Transmission Outage Acceleration Process Overview

Rob Dropkin, Transmission Operations
OC Special Session
September 8, 2022

- Defined in
 - PJM Tariff
 - Operating Agreement
 - Manual-03 Section 4.5
- Provide Generation Owner or Market Participants with a method for requesting an alternative outage schedule to alleviate FTR revenue inadequacy.
- *“The affected Transmission Owner shall determine, in its sole discretion, whether to accelerate or reschedule a transmission outage.”*

- Method 1
 - Transmission Outages Requiring Coordination With A Specific Generation Owner.
 - Transmission outage isolates a unit/plant
 - Planned or forced outage
 - Planned outages have a 6 week notification requirement (M03, Sec 4.1.13)
 - No postings are made
 - GO may make outage acceleration request prior to a planned transmission outage that bottles generation (minimum 2 weeks prior). GO can make outage acceleration request during the expected forced unit outage duration.

- Method 2
 - Transmission Outages That Could Cause Congestion Revenue Inadequacy.
 - PJM performs month-long assessment two months ahead
 - On Time Outages exceed five days scheduled to start in the month of the analysis window or Forced Outages projected to last into the month of analysis window.
 - Causes congestion revenue inadequacy in excess of \$500,000
 - PJM posts outages qualified for acceleration on OASIS by 15th of the month
 - Market participants have 1 week from posting to express willingness to accelerate a qualified outage.

- PJM awards FTRs based on the capability of the transmission system
- There must be adequate revenue from congestion to fund the FTRs that were awarded
- Revenue adequacy issues occur when we under-collect congestion revenue to fund FTRs
 - Transmission outages and de-ratings can have a significant impact on FTR revenue adequacy

Inputs

Load Forecast Data

Historical Day Ahead
Market Data

Scheduled Generation and
Transmission Outages

Future FTR Data

Updated EMS Model

Calculation

Create cases for each day
of study

Day Ahead Market tools
calculate revenue
inadequacy for each
transmission ticket

Analysis

Verify results

Post tickets that result in
revenue inadequacy over
\$500,000

Inputs

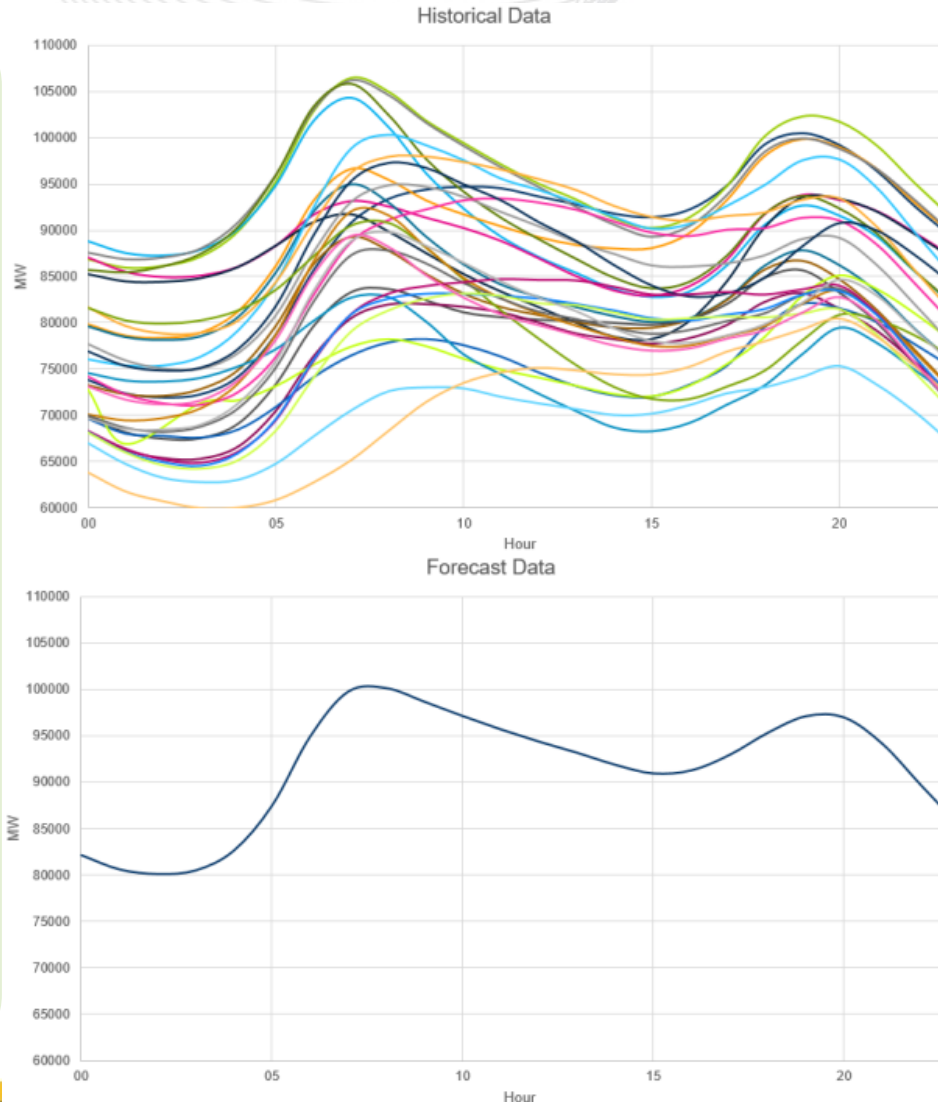
Load Forecast Data

Historical Day Ahead Market Data

Scheduled Generation and Transmission Outages

Future FTR Data

Updated EMS Model



- Average of historical load data
- Scaled for study period
- Separate weekend and weekday profiles
- Separate profile for each zone and each month

Inputs

Load Forecast Data

Historical Day Ahead
Market Data

Scheduled Generation and
Transmission Outages

Future FTR Data

Updated EMS Model

- **Historical Day Ahead cases used for sample market data**
 - Similar load day from past
 - Separate samples for weekday and weekend

Inputs

Load Forecast Data

Historical Day Ahead
Market Data

Scheduled Generation and
Transmission Outages

Future FTR Data

Updated EMS Model

- All scheduled generation and transmission outages are modeled in study
 - Includes outages that start before the start of the study period and continue into the study period

Inputs

Load Forecast Data

Historical Day Ahead
Market Data

Scheduled Generation and
Transmission Outages

Future FTR Data

Updated EMS Model

- **FTRs are input for the study month**

Inputs

Load Forecast Data

Historical Day Ahead
Market Data

Scheduled Generation and
Transmission Outages

Future FTR Data

Updated EMS Model

- **Latest quarterly EMS model is used.**
 - Includes topology for new equipment cut in

Inputs

Load Forecast Data

Historical Day Ahead
Market Data

Scheduled Generation and
Transmission Outages

Future FTR Data

Updated EMS Model

Calculation

Create cases for each day
of study

Day Ahead Market tools
calculate revenue
inadequacy for each
transmission ticket

Analysis

Verify results

Post tickets that result in
revenue inadequacy over
\$500,000

PJM Analysis for Qualifying Transmission Tickets Calculation Steps

Use Day Ahead Market tools to simulate each day on an hourly basis with all planned transmission outages implemented. Calculate revenue inadequacy for each hour of the day and for each day of the month.

For each ticket being studied, simulate each day with that ticket returned to service. Calculate revenue inadequacy for each hour of the day and for each day of the month.

Calculate difference in total revenue inadequacy for each studied ticket.

Inputs

Load Forecast Data

Historical Day Ahead
Market Data

Scheduled Generation and
Transmission Outages

Future FTR Data

Updated EMS Model

Calculation

Create cases for each day
of study

Day Ahead Market tools
calculate revenue
inadequacy for each
transmission ticket

Analysis

Verify results

Post tickets that result in
revenue inadequacy over
\$500,000

PJM posts qualified outages to OASIS
(e.g. by September 15th for outages starting in November)

Market Participant (MP) makes request for acceleration to PJM
(within 1 week)

PJM informs TO. TO provides cost estimate for acceleration or not possible
(within 1 week)

PJM reviews creditworthiness and cost allocations. PJM informs MP.

MP decides whether or not accept.

TO updates outage schedule.

- Up to 120% of estimate
 - GO/MP is responsible for actual costs (below 120%) incurred by the affected Transmission Owner.
- Exceeding 120% of estimate
 - Transmission Owner shall notify PJM prior to exceedance.
 - GO/MP will then decide whether to continue and pay the additional costs.

- Operational Data
- Data Directory
- Interregional Data Map
- PJM Tools**
- PJM Security
- System Requirements
- Upcoming Changes
- Tools Information
- Account Manager
- Billing Line Item Transfer
- Bulletin Board
- Capacity Exchange
- Data Miner
- Data Viewer
- DR Hub

Home ▶ Markets & Operations ▶ PJM Tools ▶ OASIS ▶ Outage Acceleration



Outage Acceleration

The Transmission Outage Acceleration Process and Business Practices are described in [Section 4](#) [\(WEB\)](#) of PJM Manual 03: Transmission Operations [\(PDF\)](#).

2021

[June](#) [\(PDF\)](#)

[May](#) [\(PDF\)](#)

[April](#) [\(PDF\)](#)

[March](#) [\(PDF\)](#)

[February](#) [\(PDF\)](#)

[January](#) [\(PDF\)](#)

[2020](#) | [2014 - 2019](#) [\(ZIP\)](#)

<https://www.pjm.com/markets-and-operations/etools/oasis/outage-accel.aspx>

[Home](#) ▶ [Markets & Operations](#) ▶ [PJM Tools](#) ▶ [OASIS](#)



OASIS

The Open Access Same-Time Information System (OASIS) provides information about available transmission capability for point-to-point service and a process for requesting transmission service on a non-discriminatory basis. OASIS enables transmission providers and transmission customers to communicate requests and responses to buy and sell available transmission capacity offered under the Open Access Transmission Tariff.

Outage Acceleration

2022

[June](#) [PDF](#)

[May](#) [PDF](#)

[April](#) [PDF](#)

[March](#) [PDF](#)

[February](#) [PDF](#)

[January](#) [PDF](#)

[2014 - 2021](#) [ZIP](#)

<https://pjm.com/markets-and-operations/etools/oasis>

Presenter:
Rob Dropkin,
Robert.Dropkin@pjm.com

Facilitator:
Rich Brown,
Richard.Brown@pjm.com

Transmission Outage Acceleration Process



Member Hotline

(610) 666 – 8980

(866) 400 – 8980

custsvc@pjm.com

**PROTECT THE
POWER GRID**
**THINK BEFORE
YOU CLICK!**



Be alert to
malicious
phishing emails.

Report suspicious email activity to PJM.
(610) 666-2244 / it_ops_ctr_shift@pjm.com

