



# Transmission Expansion Advisory Committee PEPCO Supplemental Projects

September,13 2024



# Solutions

Stakeholders must submit any comments within 10 days of this meeting in order to provide time necessary to consider these comments prior to the next phase of the M-3 process

**Need Number:** PEP-2024-002

**Process Stage:** Solutions Meeting 9/13/2024

**Previously Presented:**

Need Meeting 07/09/2024

**Project Driver:**

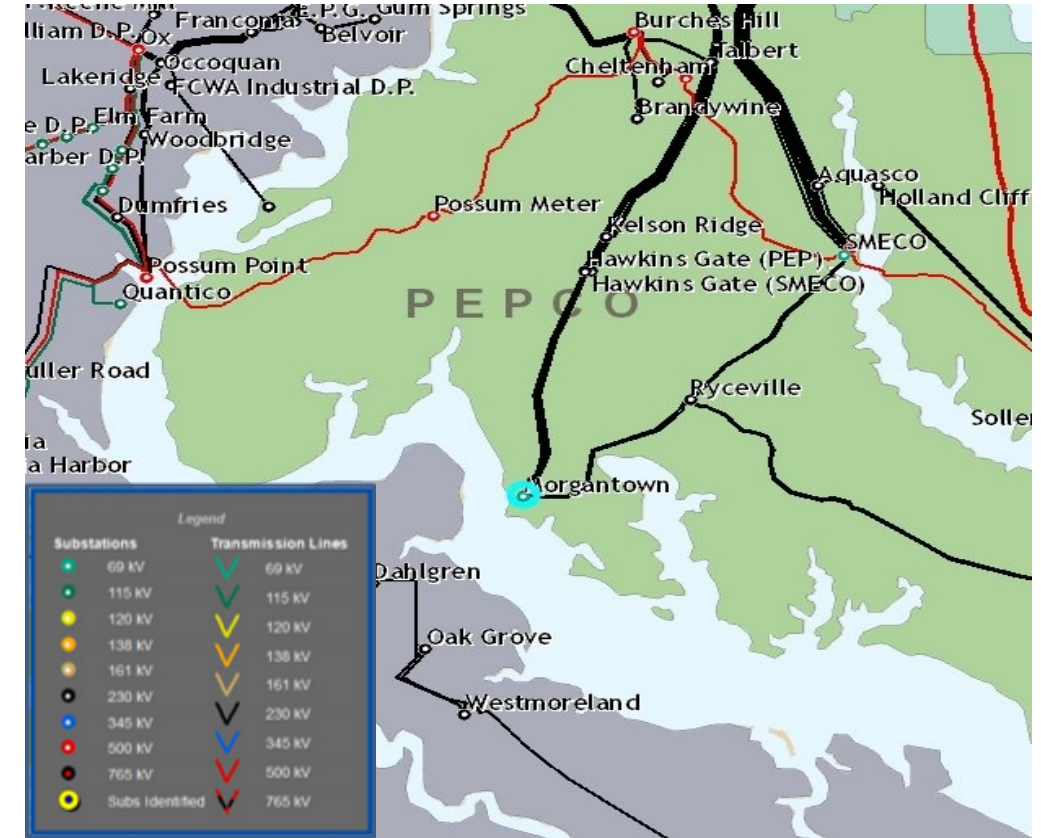
- Equipment Material Condition, Performance and Risk

**Specific Assumption Reference:**

- Transmission infrastructure replacements (EOL/condition/obsolescence) that are consistent with efficient asset management decisions

**Problem Statement:**

- The Double circuit 230 kV line 23071 and 23073 between Ryceville – Morgantown is a 10 mile line with 1590 ACSR conductor and 7#6 static wire that was constructed in 1968. These transmission lines interconnect into SMECO through the Ryceville substation. This line is 56 years old and nearing end of useful life.
- There are 55 lattice towers structures, including the three river crossing towers along this ROW. The original steel lattice towers were erected in 1968. Structure inspections results showed the following deficiencies: Heavy corrosion at the base of the legs, broken insulators, lower ground resistivity, loss of paint or galvanized steel and broken static wires.
- Inspections of the static and phase conductors identified that they were in poor condition and need to be replaced.



**Need Number:** PEP-2024-002

**Process Stage:** Solutions Meeting 09/13/2024

**Proposed Solution:**

- Rebuild approximately 10 miles of existing 1968 double-circuit lattice tower transmission lines 23071 and 23073 with new steel monopole double circuit structures along existing route.
- Replace all 55 lattice towers with steel monopoles and drilled pier foundations, including the three river crossing towers.
- Existing Lapwing conductor will be replaced with new 1590 45/7 ACSR Lapwing conductor.

Total estimated cost: \$92.1M

Facility	Summer Normal	Summer Emergency	Winter Normal	Winter Emergency
	(MVA)	(MVA)	(MVA)	(MVA)
Existing				
Ryceville to Morgantown -Rebuild 23071 & 23073	552	706	620	746
Proposed				
Ryceville to Morgantown -Rebuild 23071 & 23073	608	764	715	875

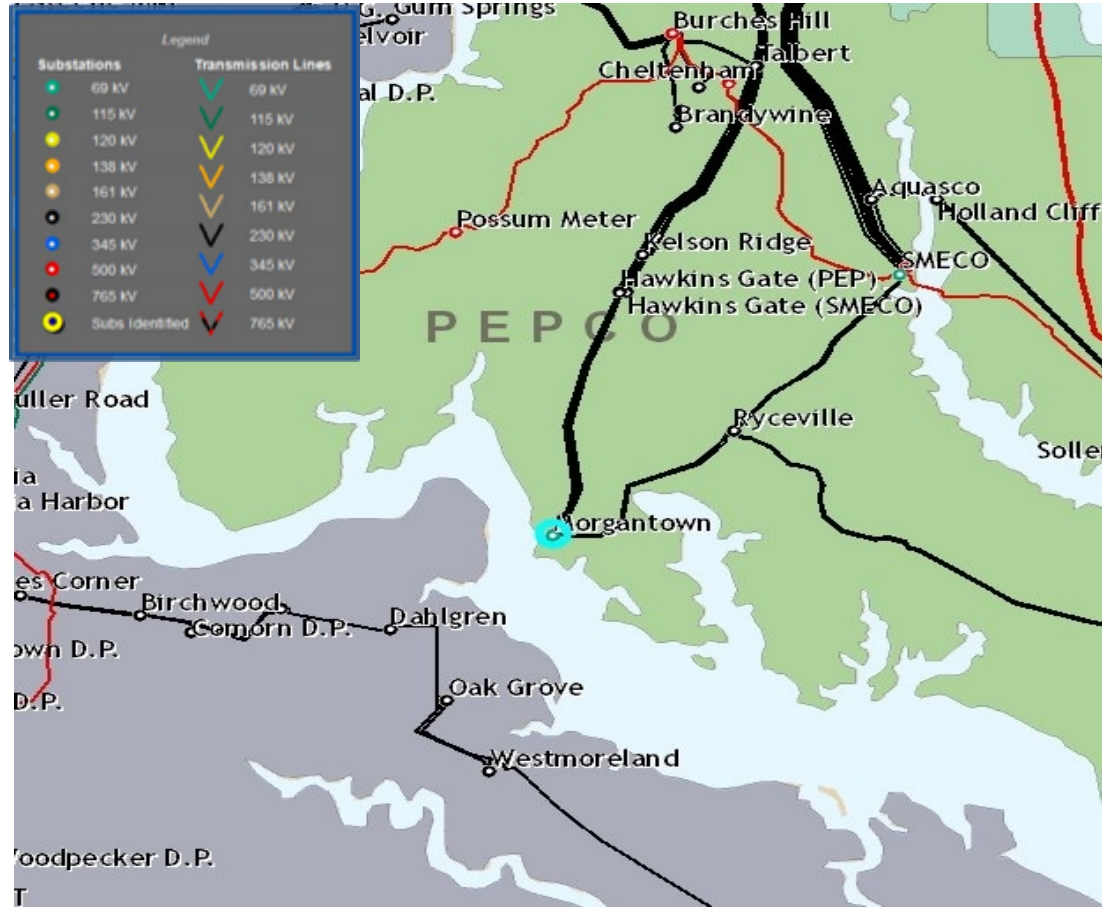
**Alternatives Considered:**

No feasible alternatives available

**Projected In-Service:** 4/1/2028

**Project Status:** Engineering

**Model:** RTEP 2028



# Appendix

# High level M-3 Meeting Schedule

Assumptions	Activity	Timing
	Posting of TO Assumptions Meeting information	20 days before Assumptions Meeting
	Stakeholder comments	10 days after Assumptions Meeting
Needs	Activity	Timing
	TOs and Stakeholders Post Needs Meeting slides	10 days before Needs Meeting
	Stakeholder comments	10 days after Needs Meeting
Solutions	Activity	Timing
	TOs and Stakeholders Post Solutions Meeting slides	10 days before Solutions Meeting
	Stakeholder comments	10 days after Solutions Meeting
Submission of Supplemental Projects & Local Plan	Activity	Timing
	Do No Harm (DNH) analysis for selected solution	Prior to posting selected solution
	Post selected solution(s)	Following completion of DNH analysis
	Stakeholder comments	10 days prior to Local Plan Submission for integration into RTEP
	Local Plan submitted to PJM for integration into RTEP	Following review and consideration of comments received after posting of selected solutions

# Revision History

09/03/2024 – V1 – Original version posted to pjm.com