



Historical Performance of Base Capacity Resources (Wind and Solar)

Tom Falin
Resource Adequacy Planning
Seasonal Capacity Resources Senior
Task Force
May 6, 2016

PJM examined the performance of wind and solar resources over two sets of hours:

1. Suggested Intermittent Performance Hours under CP
 - Period covered is 6/1/2013 – 2/29/2016
 - All days in Jan. and Feb. HE 0600-0900 and 1800-2100 (1424 total hours)
 - All days in June, July and Aug. HE 1500-2000 (1656 total hours)
2. All hours in which load exceeded the 50/50 W/N seasonal peak (hours associated with loss of load risk)
 - Period covered is 6/1/2008 – 12/31/2015
 - 68 summer hours exceeded the 50/50 W/N summer peak
 - 143 winter hours exceeded the 50/50 W/N winter peak

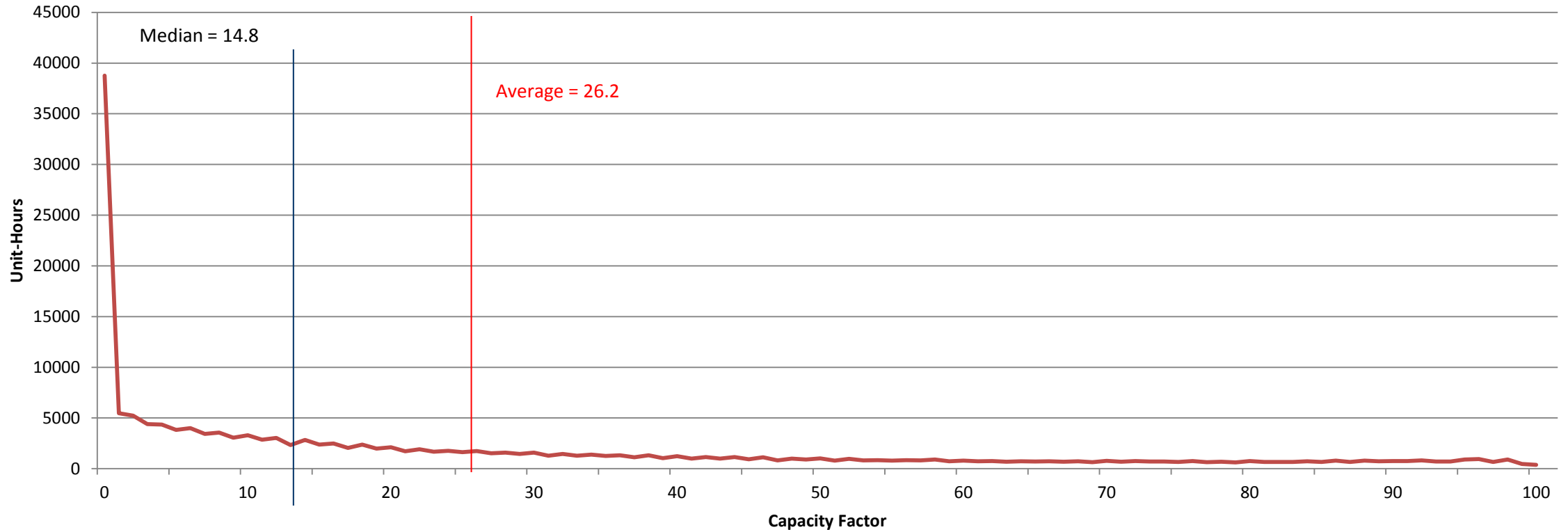


Intermittent Unit Capacity Factors CP Performance Hours

Unit Type	Summer Hours		Winter Hours		All Hours	
	Average	Median	Average	Median	Average	Median
Wind	15.0	7.4	39.0	33.3	26.2	14.8
Solar	30.1	24.8	2.0	0.0	17.0	2.7

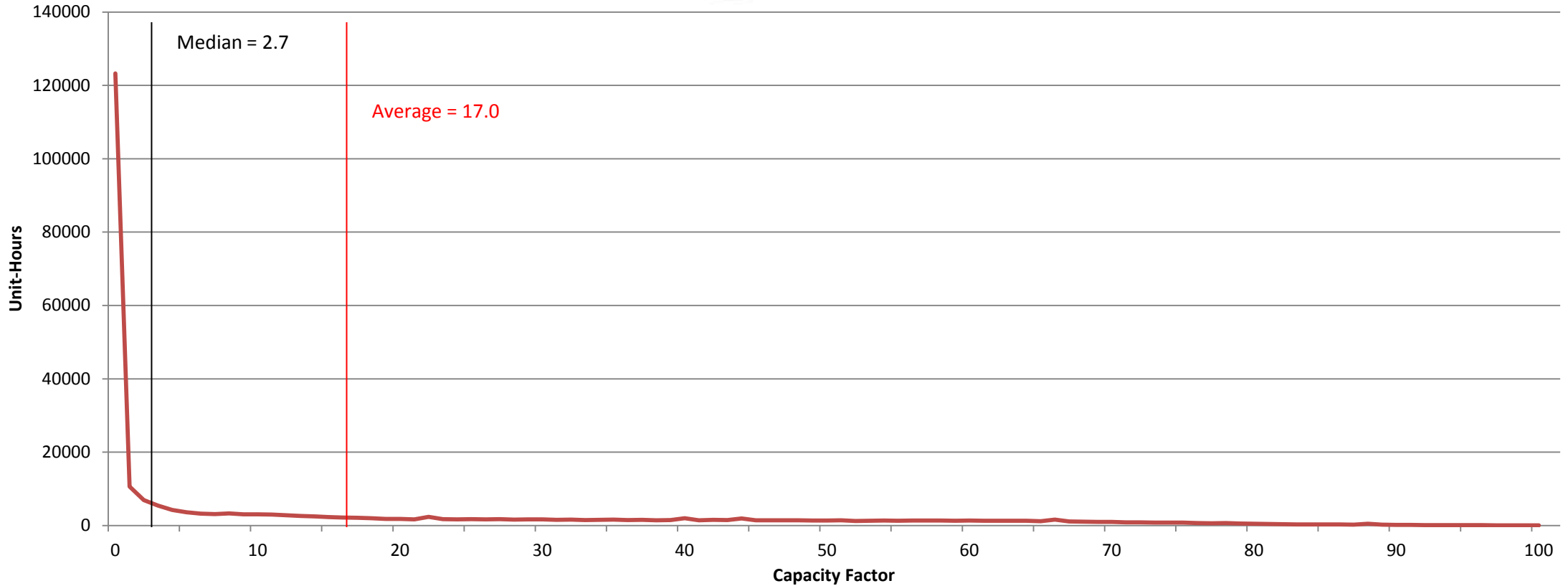
Wind Performance in CP Hours Capacity Factor Data Profile

Wind Performance Across all CP hours 2013-2016



Solar Performance in CP Hours Capacity Factor Data Profile

Solar Performance Across all CP hours
2013-2016



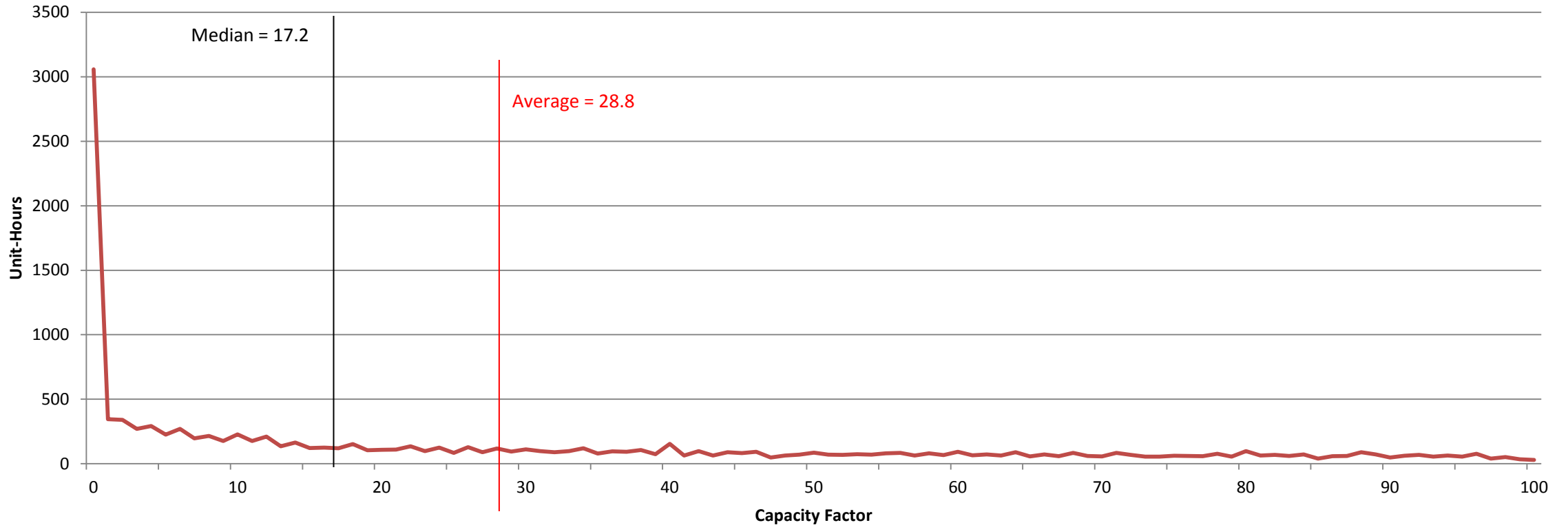


Intermittent Unit Capacity Factors Hours when Load > 50/50 W/N Peak

Unit Type	Summer Hours		Winter Hours		All Hours	
	Average	Median	Average	Median	Average	Median
Wind	11.2	4.5	36.8	31.6	28.8	17.2
Solar	42.2	42.1	15.3	0.0	21.3	3.2

Wind Performance Hours when Load > 50/50 WN Peak Capacity Factor Data Profile

Wind Performance Across all Hours when Load > 50/50 WN Peak 2008-2015





Solar Performance Hours when Load > 50/50 WN Peak Capacity Factor Data Profile

Solar Performance Across all Hours when Load > 50/50 WN Peak 2008-2015

